



WASTEWATER DISCHARGE REQUIREMENTS FOR BUSINESSES LOCATED IN SAN BERNARDINO, HIGHLAND, AND LOMA LINDA



CLEAN WATER REQUIREMENTS

The Clean Water Act (CWA) was signed by Congress in 1972. The CWA was passed to protect the waters of the United States from pollution and to ensure the quality of the water for future generations.

The CWA granted the United States Environmental Protection Agency the authority to develop water quality standards which are required to be met by Publicly Owned Treatment Works (POTWs).

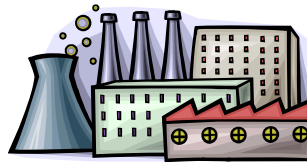
The General Pretreatment Regulations in 40 CFR require POTWs to develop an approved Pretreatment Program to regulate the wastewater generated from industrial and commercial facilities that discharge to the POTW.

The Pretreatment Program is required to enforce the CWA to protect the POTW from pollutants that have the potential to interfere with or pass through the wastewater treatment plant, endanger the health and safety of the public or treatment system workers, or limit the options available for the management of biosolids generated.



WHO DO THESE REGULATIONS APPLY TO?

The Clean Water Regulations apply to all industrial and commercial users who discharge industrial wastewater to the San Bernardino Water Reclamation Plant. All industrial/commercial wastewater is required to meet the requirements specified in San Bernardino Municipal Code Chapter 13.32.



DISCHARGE CONDITIONS

The Environmental Control Section requires all industrial/commercial businesses to complete an industrial waste permit application. The permit application is reviewed to determine if an industrial user permit will be issued or if any pretreatment equipment is required to be installed.

Permitted facilities are inspected annually and an annual sample is collected to verify compliance with required discharge limits. Additional monitoring and reporting requirements may apply to certain classes of industries.

TYPES OF PERMITTED INDUSTRIES

- ◆ Food and Dairy Manufacturers
- ◆ Industrial/Commercial Laundries
- ◆ Metal Finishers/Platers
- ◆ Beverage/Water Bottling Facilities
- ◆ Meat/Poultry Processing Plants
- ◆ Large Institutional Facilities
- ◆ Restaurants/Food Service Facilities
- ◆ Automotive Repair Facilities
- ◆ Commercial Car Washes
- ◆ Photo/X-Ray Developers

TYPICAL PRETREATMENT REQUIREMENTS

- ◆ Interceptor/Clarifier
- ◆ pH Neutralization System
- ◆ Flow Monitoring Equipment
- ◆ Silver Recovery System
- ◆ Electrical Conductivity Meter

