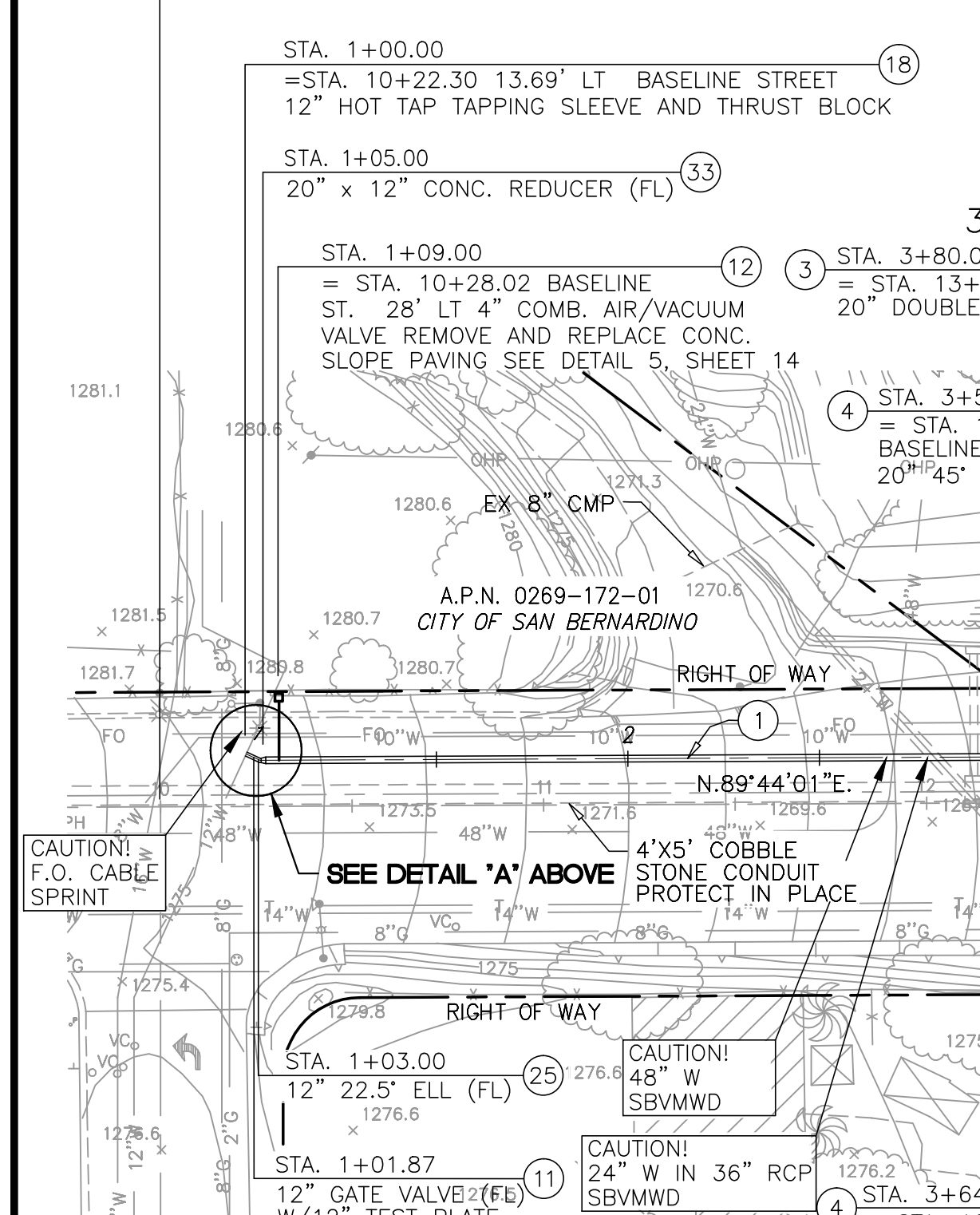
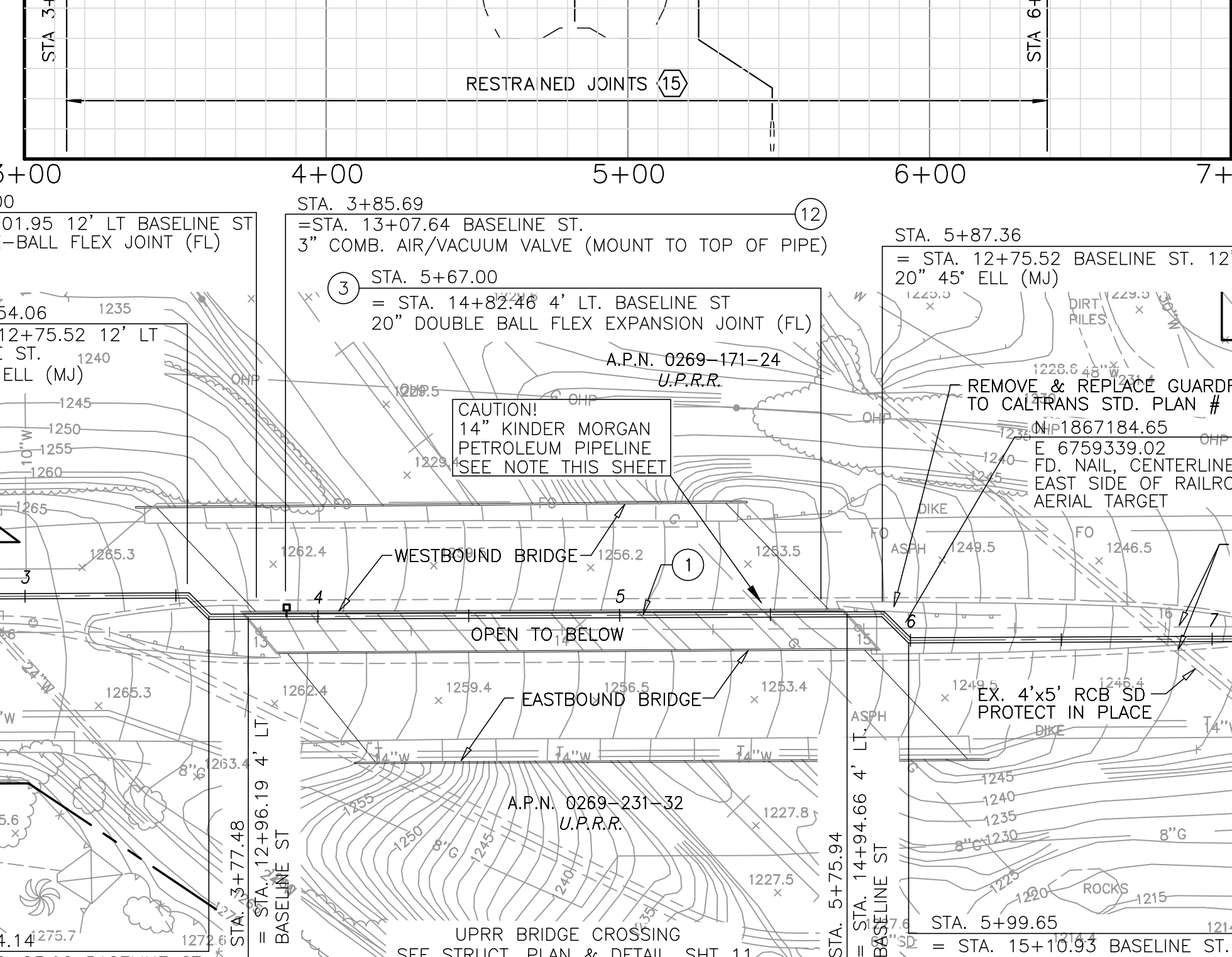


SCALE  
HORIZ. 1"=40'  
VERT. 1"=4'

S/W COR. SEC. 31  
N 186°18'26" E 6758824.92  
FD. C.S.M. BRASS CAP PER CSFB 325/43  
ELEV. = 1275.44  
STA 10+00 BASELINE ST.



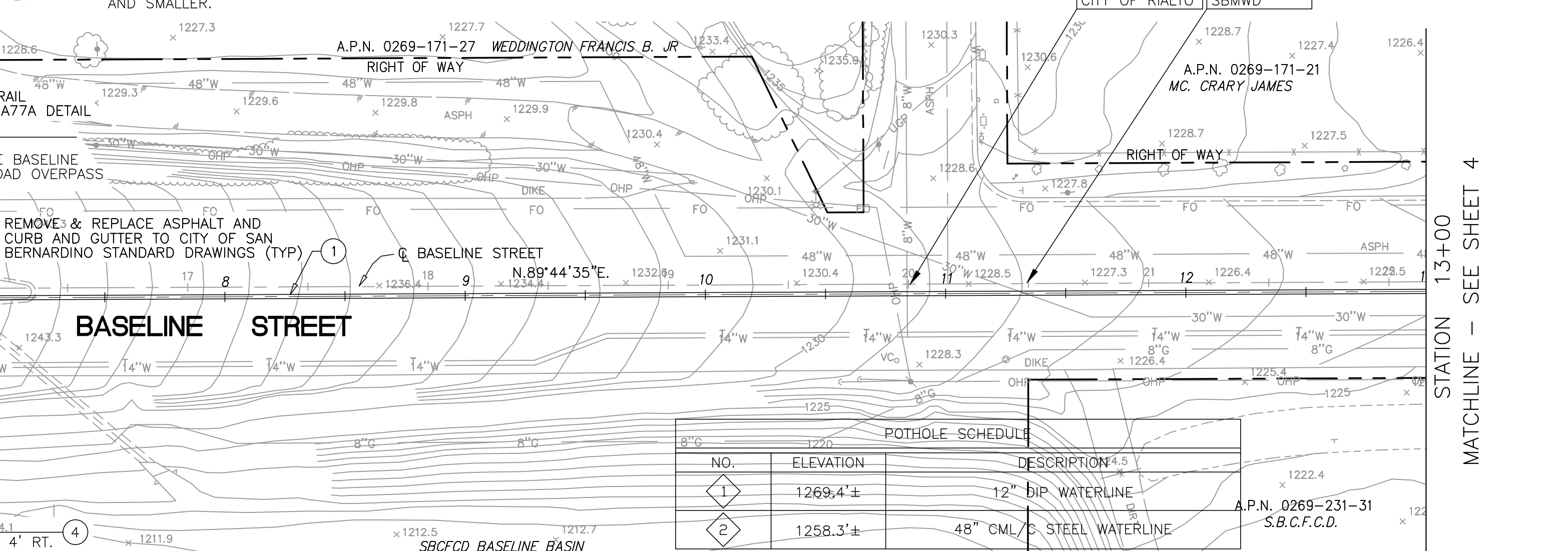
**UNDERGROUND SERVICE ALERT**  
CALL: TOLL FREE  
**811**  
TWO WORKING DAYS  
BEFORE YOU DIG



**UNDERGROUND SERVICE ALERT**  
CALL: TOLL FREE  
**811**  
TWO WORKING DAYS  
BEFORE YOU DIG

**CONSTRUCTION NOTES:**

- ① INSTALL 20" THICKNESS CLASS 50 CEMENT MORTAR LINED DUCTILE IRON PIPE
- ③ INSTALL 20" DOUBLE BALL FLEXIBLE EXPANSION JOINT (MJ), FLEX TEND BY EBAA IRON OR APPROVED EQUAL.
- ④ INSTALL 20" 45' DUCTILE IRON ELL (MJ)
- ⑧ INSTALL 20" 22.5' DUCTILE IRON ELL (MJ)
- ⑩ INSTALL 20" FL x MJ ADAPTER
- ⑪ INSTALL 12" GATE VALVE (FL) W/ 12" TEST PLATE, SEE DETAIL 3, SHEET 12
- ⑫ INSTALL COMBINATION AIR RELEASE & AIR VACUUM VALVE, SIZE PER PLAN PER SBMWD STD W. 7.1, SEE DETAIL 1, SHEET 13 FOR 3" VALVES AND LARGER; SEE DETAIL 4, SHEET 13 FOR VALVES 2" AND SMALLER.
- ⑮ INSTALL LINEAR JOINT RESTRAINT PER MANUFACTURER'S SPECIFICATIONS AND SBMWD STD. DWG. NO. W 6.4 ON ALL JOINTS WITHIN MIN. LENGTH, SPECIFIED ON PROFILE.
- ⑱ INSTALL 12" HOT TAP, TAPPING SLEEVE AND THRUST BLOCK PER DETAIL 7, SHEET 12
- ⑳ INSTALL 12" 22.5' DUCTILE IRON ELL (FL)
- ㉓ INSTALL 20" x 12" CONC. REDUCER (FL)
- ㉔ INSTALL 20" 22.5' DUCTILE IRON ELL (FL)



NO.	ELEVATION	DESCRIPTION
①	1269.4±	12" DIP WATERLINE
②	1258.3±	48" CML/C STEEL WATERLINE

CITY OF SAN BERNARDINO MUNICIPAL WATER DEPARTMENT  
PROJECT TITLE  
STA. XX+XX.XX - STA. XX+XX.XX

STATION 13+00 MATCHLINE - SEE SHEET 4

DRAWING SCALES:  
HORIZ. 1"=40' VERT. 1"=4'  
C.O. NO.:  
**XXXX**  
**DWG C1**  
SHEET **6** OF **XX**  
C-XXXX-6-C-C1.DWG