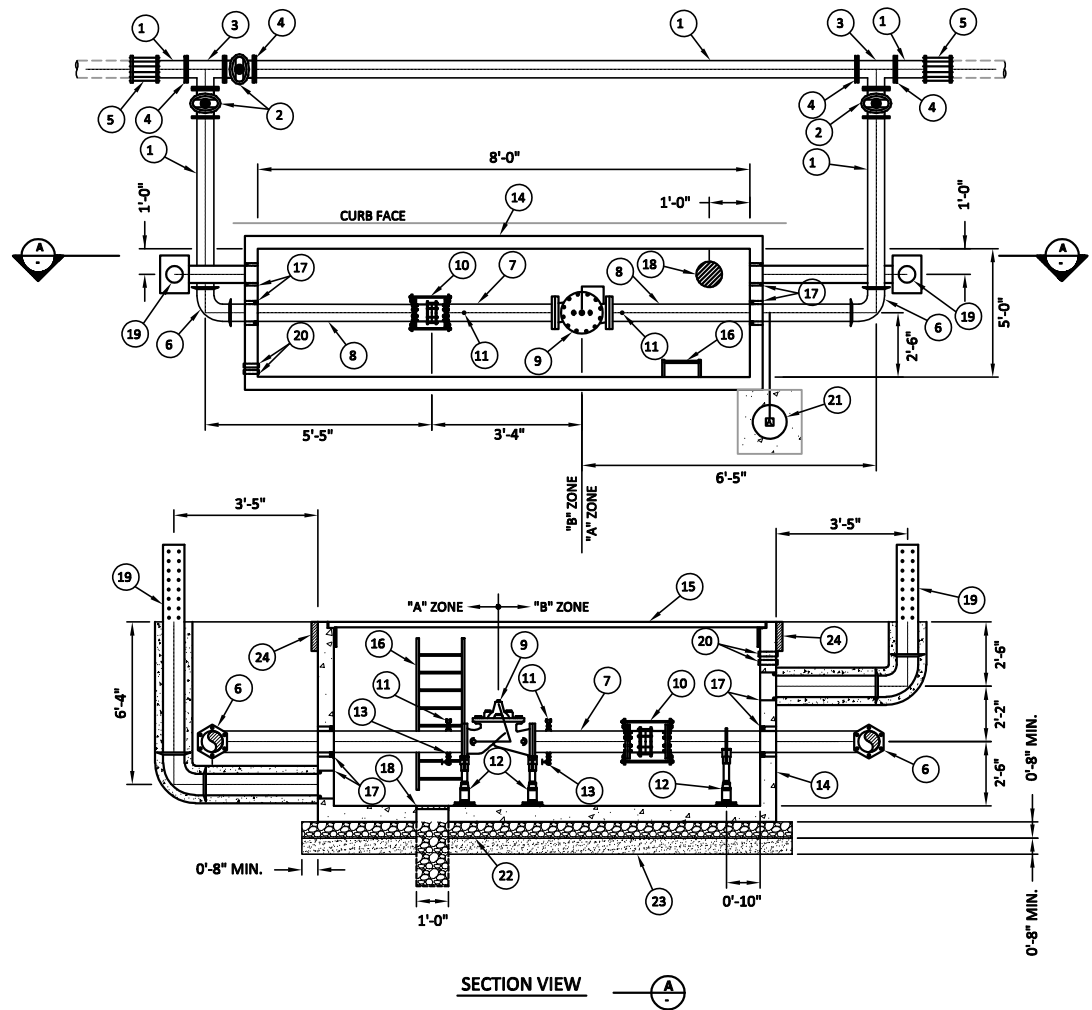


ITEM DESCRIPTION

- ① INSTALL 8" DUCTILE IRON PIPE (D.I.P.), PRESSURE CLASS 350 (CUT TO FIT).
- ② INSTALL 8" (F x MJ) RESILIENT SEAT GATE VALVE PER SBMWD STD. DWG. W3.1.
- ③ INSTALL 8" (F) DUCTILE IRON TEE.
- ④ INSTALL 8" (F x MJ) ADAPTER.
- ⑤ INSTALL 8" FLEXIBLE COUPLING.
- ⑥ INSTALL 8" DUCTILE IRON 90° (MJ) ELBOW.
- ⑦ INSTALL 8" (F) DUCTILE IRON SPOOL, PRESSURE CLASS 350.
- ⑧ INSTALL 8" (F x PLAIN END) DUCTILE IRON SPOOL, PRESSURE CLASS 350.
- ⑨ INSTALL 8" CLA VAL 600 SERIES (CONTROLS TO BE CALLED OUT BY SBMWD)
- ⑩ INSTALL 8" RESTRAINED FLEXIBLE COUPLING RESTRAINT PER SBMWD STD. DWG. W6.27.
- ⑪ INSTALL 1" PRESSURE GAUGE OUTLET PER SBMWD STD. DWG. W6.32.
- ⑫ INSTALL PIPE SUPPORT OR UNDER FLANGE PIPE SUPPORT PER SBMWD STD. DWG. W6.28.
- ⑬ INSTALL 1" DRAIN CONNECTION PER SBMWD STD. DWG. W6.31.
- ⑭ INSTALL PRECAST CONCRETE VAULT (DIMENSIONS PER PLAN).
- ⑮ INSTALL 5' x 8' ALUMINUM TROUGH FRAME HS-20 LOADING SPRING ASSISTED DOUBLE DOOR WITH 1-1/2" PIPE COUPLING, BOTTOM OUTLET DRAIN, PER SBMWD STD. DWG. W6.21.
- ⑯ INSTALL FRP LADDER WITH LADDER UP DEVICE PER SBMWD STD. DWG. W6.22.
- ⑰ INSTALL LINK SEAL PER SBMWD STD. DWG. W6.19.
- ⑱ INSTALL 12" DIAMETER SUMP PER SBMWD STD. DWG. W6.30.
- ⑲ INSTALL 8" AIR VENT, TYPE 1, PER SBMWD STD. DWG. W6.29.
- ⑳ INSTALL PVC WALL INSERT PER SBMWD STD. DWG. W6.33.
- ㉑ INSTALL 1" AIR AND VACUUM RELEASE VALVE PER SBMWD STD. DWG. W7.3.
- ㉒ INSTALL MINIMUM 6" THICK, 3/4" CRUSHED ROCK BACKFILL (NO FINES).
- ㉓ INSTALL 6" THICK BACKFILL, SE 30 OR BETTER, 95% COMPACTION.
- ㉔ INSTALL 1/2" EXPANSION JOINT ON ALL FOUR SIDES

NOTES:

- 1. PIPING AND APPURTENANCE DIAMETERS AND LENGTHS MAY VARY BASED ON DESIGN FLOW RATE. DIAMETERS AND DIMENSIONS SHOWN ARE FOR AN 8" PRESSURE REDUCING STATION
- 2. STANDARD DRAWING DOES NOT INDICATE REQUIRED ELECTRICAL APPURTENANCES



REVISION DATE: 7/16/2014

F.D.L.	JULY 14
D.D.M.	APR. 11
M.H.L.	OCT. 07
REVISION	DATE
SCALE:	NONE

BELOW GROUND PRESSURE REDUCING STATION

APPROVED DATE 07/04/2019

WARREN HUANG, P.E. RCE 49208

DRAWING NUMBER
SBMWD
W3.9